

Wyatt Technology Europe GmbH
Hochstraße 18
56307 Dernbach, Germany



Eclipse 3 Firmware Update Program

Please read this instruction thoroughly before using the program.

This program updates all Eclipse 3 instruments running a firmware before version 3.3. The data files „FWUpdate_3.3.exe“ and „TcAdsDll.dll“ are necessary. Please copy or unpack these files into a common directory on your Harddisk. During the update process the eclipse will emit an acoustic signal and set the alarm out relay, infect all connected equipment is set to error condition.

Important prerequisites:

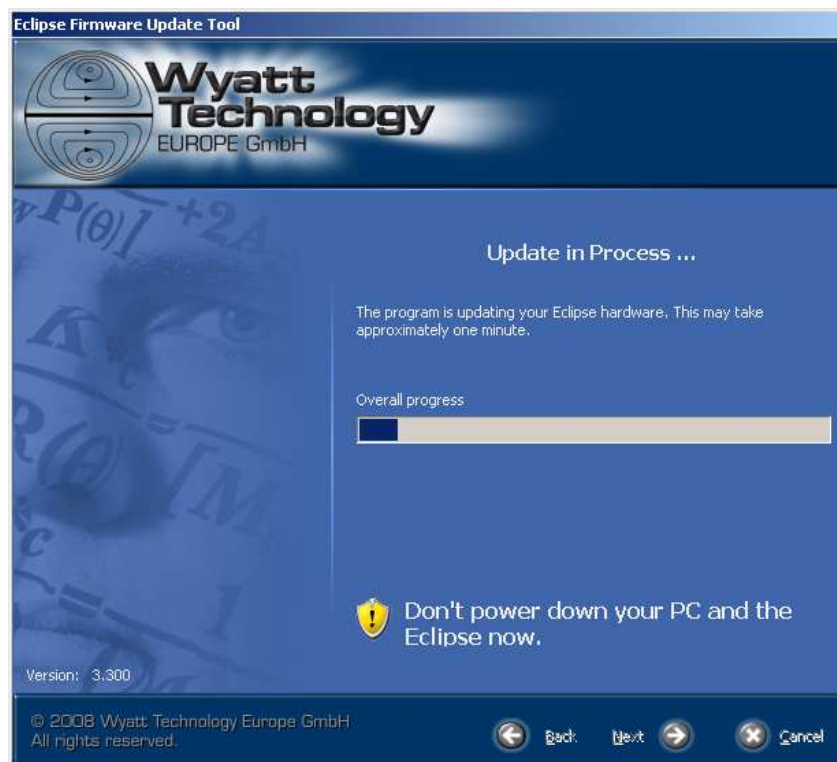
- Close all running Windows programs, especially your HPLC software (e.g. Chemstation).
 - Make sure that the Eclipse is connected to your local power supply system and that it is switched on.
 - Do not switch off either the Eclipse nor your computer while the update is running.
1. Confirm the above mentioned requirements by checking the appropriate boxes and click „next“.



2. In the next dialogue you are asked to fill in your Eclipse's IP address. To avoid address conflicts, please read out the IP address from your instrument's display. Confirm with „next“.



3. The update starts automatically. The overall progress is displayed in a diagram.



4. After finishing the update, a report is displayed to indicate successful installation. Now you can leave the program with "finish".



Trouble shooting:

In exceptional cases, the update process may fail due to internal data error. In case the recommendations below should not lead to a successful update, feel free to contact our support team:

Support@Wyatt.eu

system message displayed	action/consequence
"Your Firmware Version is newer/equal this update tool!"	Your firmware is a current version, no update necessary.
"Couldn't connect to Eclipse System"	-check the requirements mentioned in the „Important prerequisites” section. -check IP address, use data that are displayed on the Eclipse instrument.
"Your Eclipse is too old for firmware update. Please contact Wyatt for an upgrade quotation."	Your instrument needs adaptation to current state-of-the-art levels. Please contact Wyatt Technology Europe staff for information on functional and technical options.
"Firmware update failed due to unknown error! Please contact Wyatt!"	Please contact: Support@Wyatt.eu