

# Eclipse® Firmware Update

Please read this instruction carefully before using the program

## 1. Introduction

This program updates all Eclipse® instruments  $\geq$  Eclipse® 3+ running a firmware before version 4.3. The files „FW4.3\_Update\_R1801.exe“ and „TcAdsDll.dll“ are necessary. Please copy or unpack these files into a common directory on your hard disk.

Please note that the Eclipse® will emit an acoustic signal and set the alarm out relay during the update process, thus all connected instruments will be set into error condition. This behaviour is fully normal.

## 2. Important Prerequisites

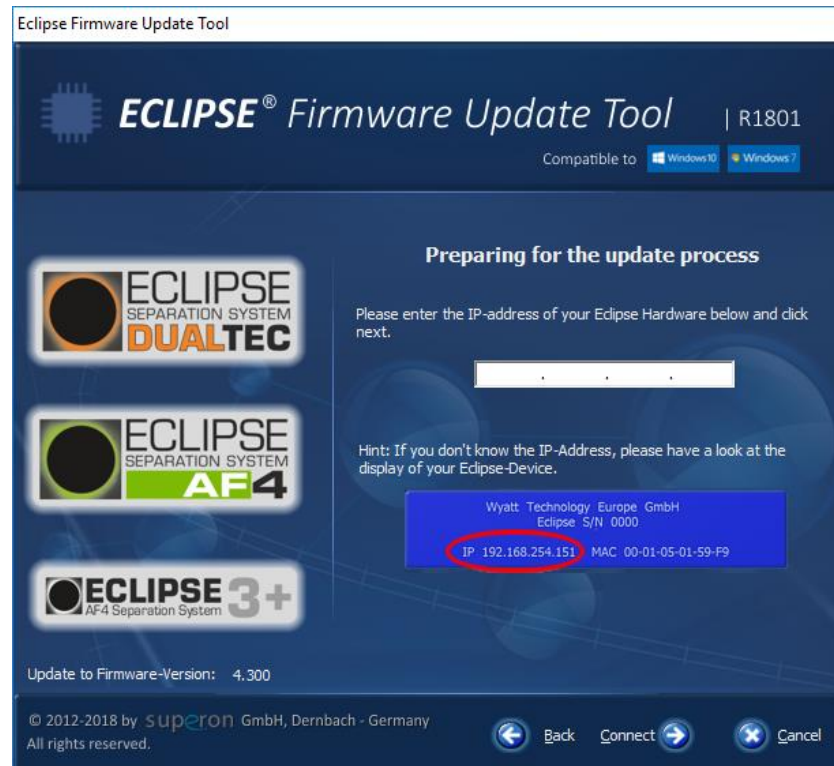
- Close all running Windows programs, especially the HPLC software (e.g. VOYAGER CDS®)
- Ensure that the Eclipse® is powered on and connected to network
- Do not switch off either the Eclipse® or your computer during the update process
- The firmware update tool is compatible with Windows 7 and Windows 10

## 3. Update Process

- a. Confirm the above mentioned requirements by checking the appropriate boxes and click „Next“.



- b. Then you will be asked to type in the IP address of the Eclipse® that can be read out from your instrument's display. Confirm with „Connect“.



- c. The Eclipse® will be connected and the compatibility to the firmware version will be checked. If this step succeeds, continue by pressing “Update”, otherwise “Cancel”.



- d. A progress bar gives information about the intermediate state while the instrument is updated. **Do not power down the Eclipse® under no circumstances during the update process.**



- e. After the update is finished successfully, you can close the program with clicking “Finish”.



## 4. Trouble Shooting

In the exceptional case that the update process fails, follow the recommendations below or contact our support team: [Support@Superon.eu](mailto:Support@Superon.eu)

System message	Action/consequence
"Couldn't connect to Eclipse System"	<ul style="list-style-type: none"><li>• Check the requirements mentioned in the „Important Prerequisites” section</li><li>• Check IP address, use the IP address displayed on the Eclipse instrument</li></ul>
"The Eclipse is not compatible to this firmware version"	<ul style="list-style-type: none"><li>• Your instrument model is <math>\leq 3+</math></li></ul>
"The Eclipse is already using a newer firmware version!"	<ul style="list-style-type: none"><li>• No update necessary</li></ul>
"Firmware update failed due to unknown error!"	Please contact: <a href="mailto:Support@Superon.eu">Support@Superon.eu</a>